

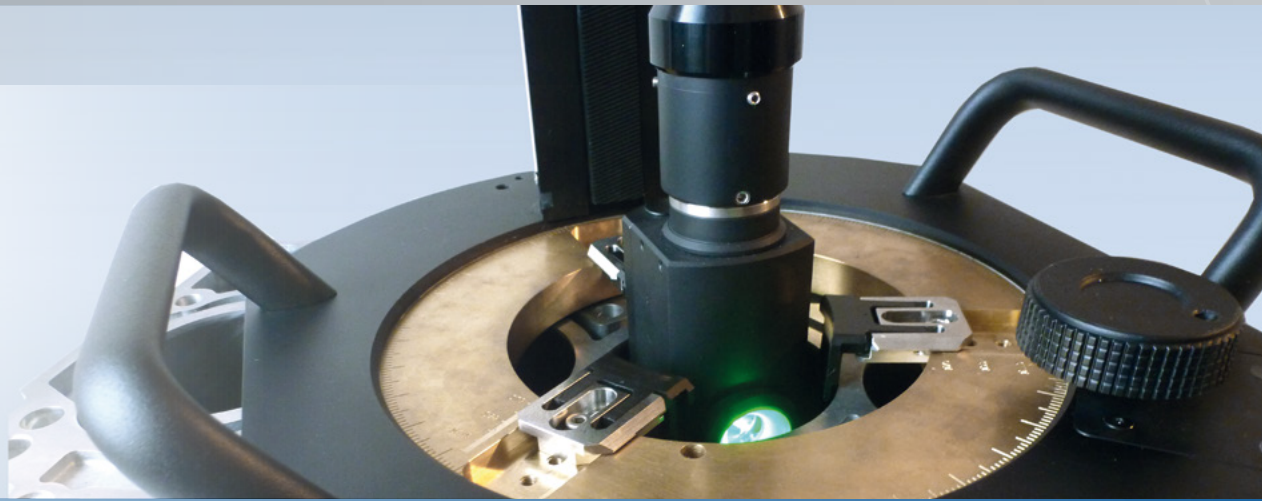
# CylinderInspector

Non contact 'in-cylinder' imaging  
Adjustable to different bore diameters  
Full 360° rotation view  
Comprehensive software



CylinderInspector  
QuickTest





- Destruction-free sample analysis
- High-end optics for optimal image of cylinder surfaces
- Integrated optical zoom, to realize variable magnification levels
- Full 360° rotational viewing with variable immersion depth
- Adaptation to different cylinder diameters
- Multi-functional illumination modes for different surfaces and micro structures
- Optional eyepiece for operator checking (depending on model)

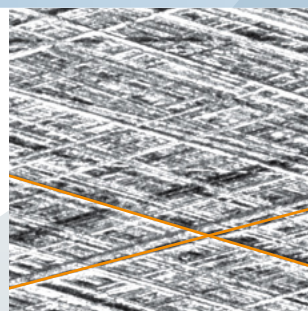
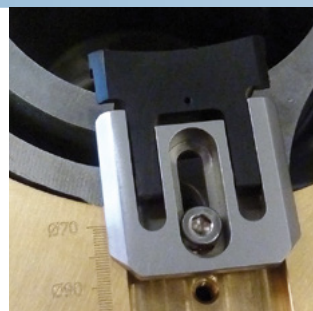
#### Your Benefit

- Implementation of a standardized inspection process between the supplier and the customer
- Rapidly adaptable to different sample specifications (dimension, structure, etc.)
- With optional software, customer-specific measurement parameters as well as measurement can be generated

CylinderInspector 2D is ideally suited to quality control in laboratories and development environments, offering accurate and repeatable measurement of cylinder parameters with a simple user control. CylinderInspector significantly increases process control possibilities, leading to greatly enhanced manufacturing stability.

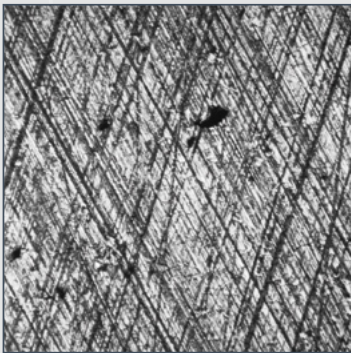
Optimal 2D CylinderInspector software suite:

- Automatic honing angle measurement
- Manual, interactive measurement
- Definition of sample-dependent limit values
- Protection of application-specific measurement profiles
- Customisable software interface and customer-specific test reports
- Modularly expandable for the analysis of pores and particles
- Optional stitching module for the creation of panoramic photographs

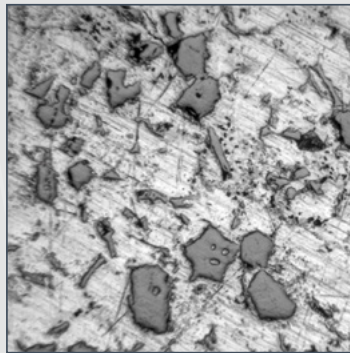


	043-102104-V4 CylinderInspector 2D	043-102113 CylinderInspector QuickTest
Camera	CMOS, USB 3.0	CMOS, USB 2.0
Illumination	Highpower LEDs, continuously dimmable brightfield & darkfield combinable	Fibre optics
Insertion depth [mm]	265	100
Cylinder diameter [mm]	60 - min.125 (> adapter needed)	70 - 89
Rotation axis	Manual driven	Manual driven
Insertion axis	Manual driven	Manual driven
Focus axis	Manual driven	Manual driven
Magnification	Integrated 7x zoom (with click stops)	Integrated 7x zoom (with click stops)
Field of View [mm]	~ 6.8 x 5.4 - 1.0 x 0.8	~ 6.2 x 5.0 - 0.9 x 0.7
<b>Optional Accessories</b>		
045-200145LC	--	Eyepiece with C-Mount adapter
043-102112-100	--	Darkfield illumination
043-102104-V4-A02	HD - Module • FOV [mm]: ~1.7 x 1.3 - 0.3 x 0.2 • brightfield & darkfield combinable	--
043-102104-V4-A03	Stand 1 for small objects for object dimensions WxLxH [mm]: 245 x 245 x 300	--
043-102104-V4-A06	Stand 2 for small objects for object dimensions WxLxH [mm]: 445 x 445 x 300	--
043-102104-V4-A07	alignment tool for fixing calibration targets	--

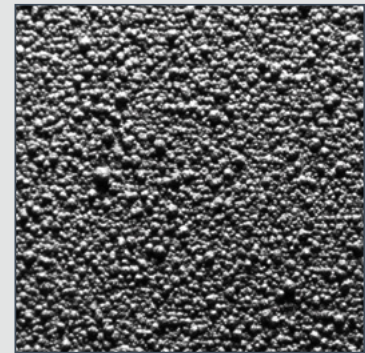
Specifications are subject to change without prior notice



Analysis of honing structures



Silica destruction rate



Imaging of sputtered surfaces

**Opto GmbH**  
Lochamer Schlag 14  
82166 Gräfelfing  
München, Deutschland

+49 89 89 80 550  
info@opto.de  
www.opto.de

**Opto UK Ltd**  
Daresbury Innovation Centre  
Keckwick Lane, Daresbury  
Cheshire WA4 4FS, United Kingdom

+44 1925 606 595  
info@opto-uk.com  
www.opto-uk.com