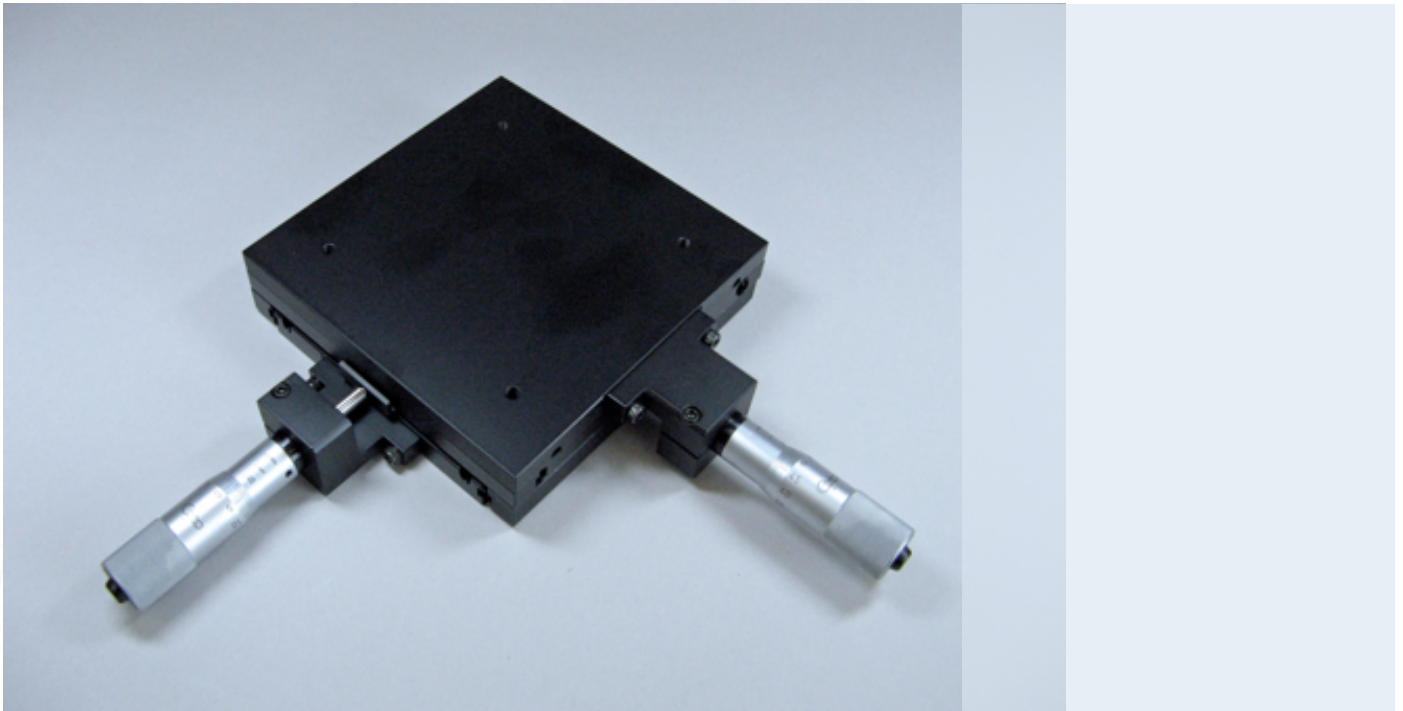


Measuring Stage 50x50 mm Analog

Messtisch 50x50 mm Analog

Table de mesure 50x50 mm analogique



Technical Features

Article number 100-MS50-AN

- Cover plate 135 x 135 mm

- Stage height = 35 mm

- Maximum load 10 kg

- with 2 manual micrometer spindles Measurement range: 50 mm; Resolution: 0.01 mm



Technical Drawing

