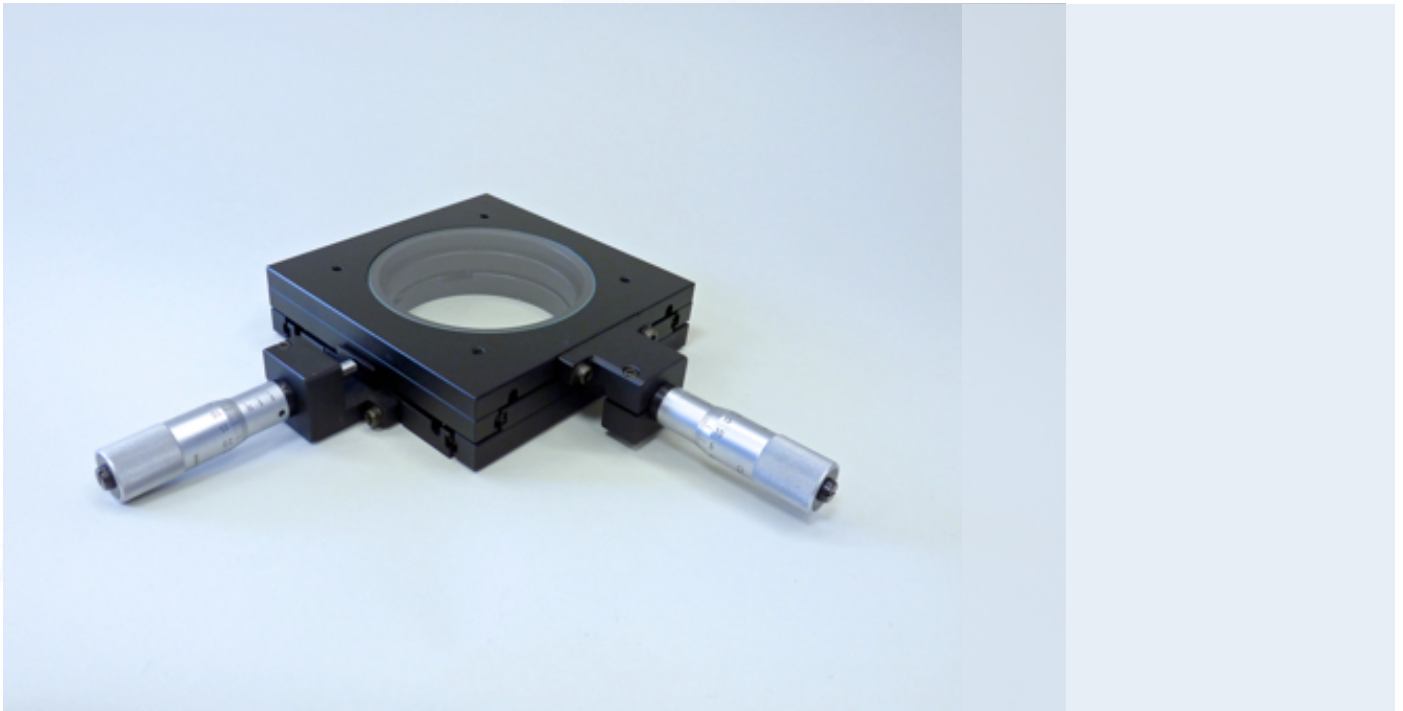


## Measuring Stage 25x25 mm Analog, Glass Plate

Messtisch 25x25 mm Analog, Glasplatte

*Table de mesure 25x25 mm analogique, plaque de verre*



### Technical Features

Article number 100-MS25-GAN

- Glass plate D=100 mm for incident and transmitted light application
- Cover plate 135 x 135 mm
- Stage height = 35 mm
- Maximum load 10 kg
- with 2 manual micrometer spindles Measurement range: 25 mm; Resolution: 0.01 mm



## Technical Drawing

