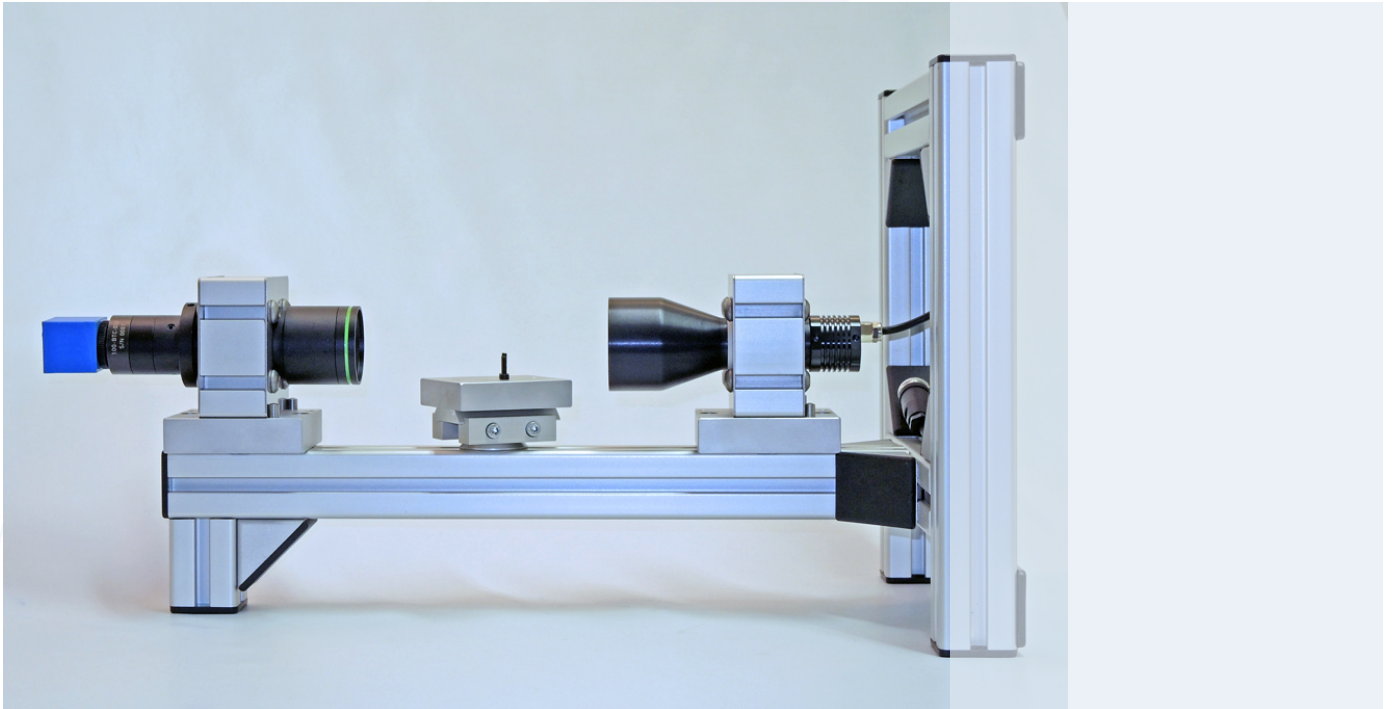


Telecentric test bench

Telezentrische Test-Bank



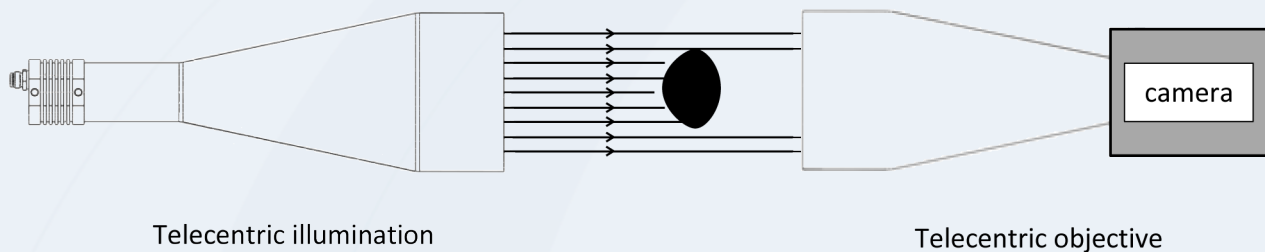
Technical Aspects

048-BTC-BCH-S

- Optimized for 1 1/8" and 2/3" C-Mount Cameras
- FoV with 2/3" camera 42x32mm (52mm Image circle)
- Resolution 45% 70LP/mm
- Field Depth +/- 8mm
- Telecentricity 0.08°
- F-No.: FB
- Distortion 0.08%
- Telecentric light (blue/red/green/white)
- Variable neutral density filter
- 24V DC / 700mA

Technical Drawing

Illumination principle



Configuration

- Integrated 0,2x Bi-Telecentric Objective lens
- Telecentric illuminator (Red, Green, Blue, White)
 - 'M12' type power cable (1m)
 - Input Voltage 24V DC
 - Forward Current 700mA
 - On/OFF Time 300ys
 - Maximum trigger Frequency 300Hz
- Manufactured from standard aluminium profile enabling simple integration
- Complete unit can be vertically or horizontally oriented
- Column length: 550mm
- Target Holder carriage for horizontal and vertical position
- Pre adjusted for precise measurements
- Every unit fully tested



Available configuration

- | | |
|------------------------------------------------|------------------|
| Bi-Telecentric Bench 0,2x with 625nm red LED | (048-BTC-BCH-SR) |
| Bi-Telecentric Bench 0,2x with 520nm green LED | (048-BTC-BCH-SG) |
| Bi-Telecentric Bench 0,2x, with 465nm blue LED | (048-BTC-BCH-SB) |
| Bi-Telecentric Bench 0,2x, with white LED | (048-BTC-BCH-SW) |