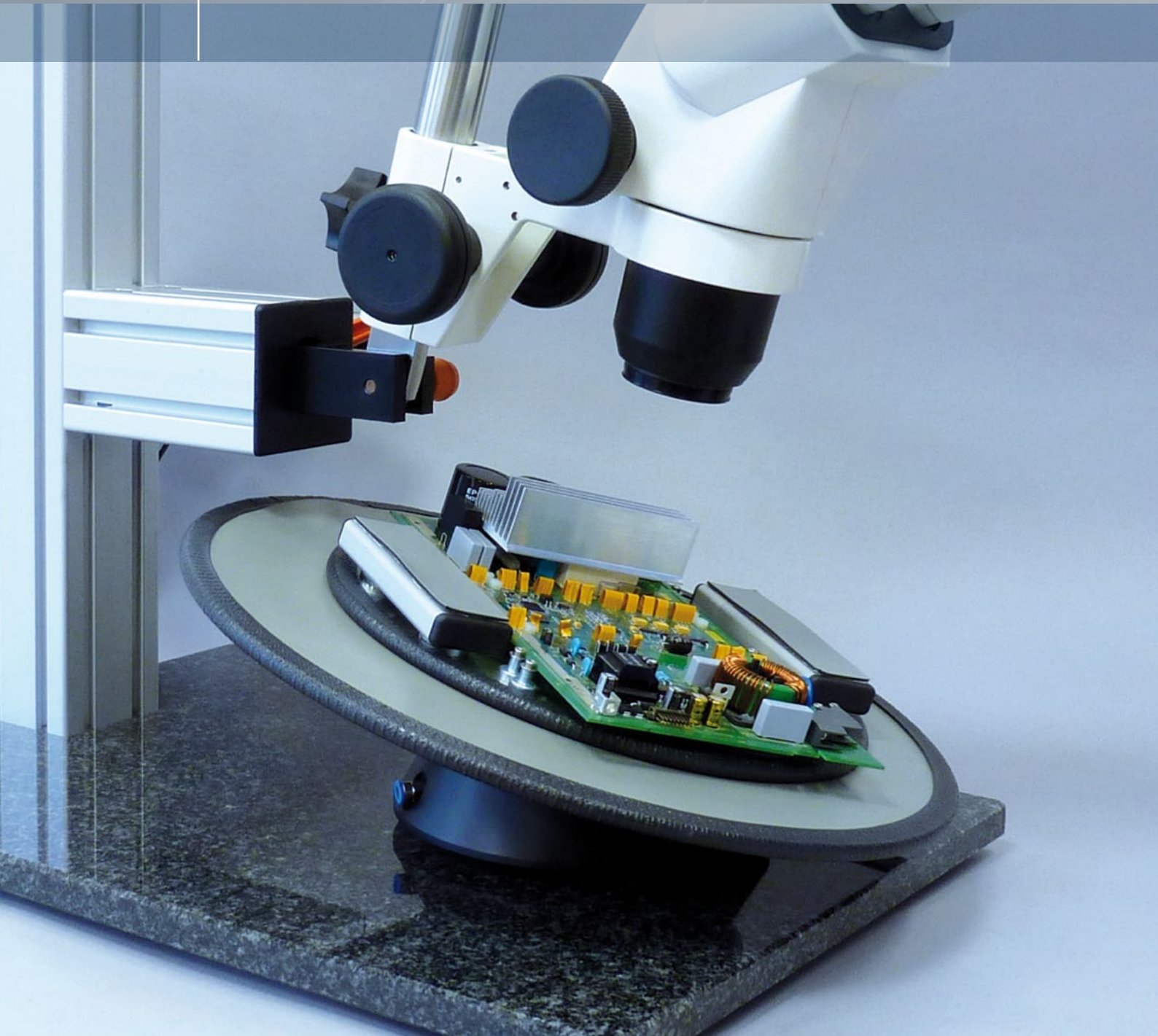


# Tilting Table

Ergonomic work for  
360° inspection tasks

Workplace with stable  
tripod and microscope



Tilting Table - Vacuum with magnetic fixings and hand rests



## Perfect Flexibility

Three dimensional objects often benefit from a specific angle of view in order to reveal key details. With our Tilting Table, it is possible to position your microscope securely at an angle or to tilt and fix your samples at the desired positions.

The entire system from granite slab, stable tripod and microscope mounting adds up to a tilt-proof and ergonomic microscope workstation. Its objects and the microscope can be aligned and fixed to each other at a certain angle.

## Key Features

- Rock solid stand for many types of inspection
- Inclined viewing
- Easy positioning of objects

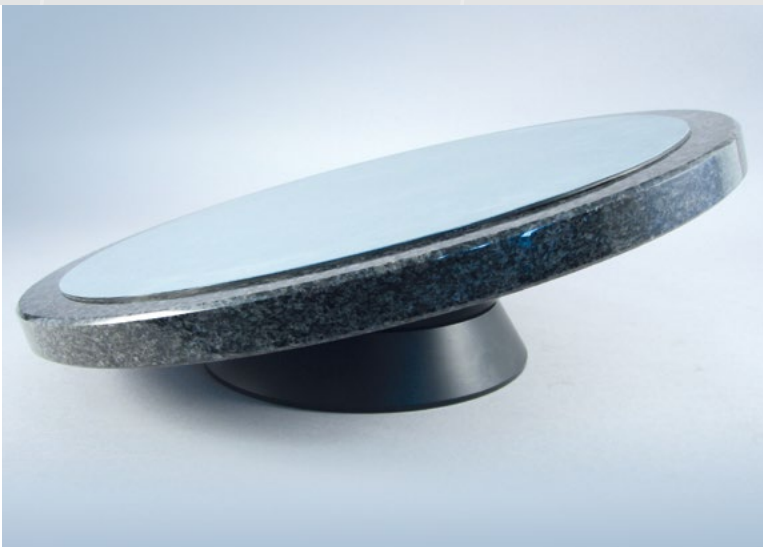
## Your Benefit

- Highly ergonomic inspection stand
- Quick and easy full 360° inspection
- Compatible with all major microscope brands
- Perfect for Electronic Board Repair



## Tilting table | specification

Article no.:	043-631006	043-631003	043-631005
Diameter	ø 300 mm	ø 450 mm	ø 400 mm
Plate	steel	steel	granite
Component fixation	magnetic fixing	magnetic fixing	non-slip rubber ESD surface
Fixing the tilting position	Vacuum adjustment with foot swich	Vacuum adjustment with foot swich	own weight
Weight	ca. 5 kg	7.8 kg (including support plates)	ca. 9 kg
Accessories	2 Magnetic hand support plates 8 Conductor board holding magnets	2 Magnetic hand support plates 8 Conductor board holding magnets	



Version 043-631005  
with granite slab and  
non-slip rubber ESD surface

261015

**Opto GmbH**  
Lochhamer Schlag 14  
82166 Gräfelfing  
Munich, Germany

+49 89 89 80 550  
info@opto.de  
www.opto.de

**Opto UK Ltd**  
Daresbury Innovation Centre  
Keckwick Lane, Daresbury  
Cheshire WA4 4FS, United Kingdom

+44 1925 606 595  
info@opto-uk.com  
www.opto-uk.com

**Opto France S.A.S.**  
12, rue du Dr Geley  
74000 Annecy  
France

+33 4 50 60 58 22  
info@opto-france.com  
www.opto-france.com