

# Imaging Modules

for Industrial and  
Non-Industrial Applications

IM·linea S

IM·linea M

IM·compact M

Designed, manufactured and tested in Germany to the highest optical standards.



**IM-series** countless variations

Industry 4.0 demands  
new Modules for every application

Compact form factor  
linea S Eco USB



## Imaging Modules

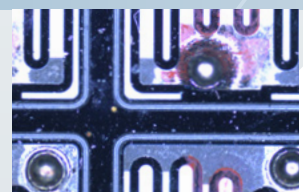
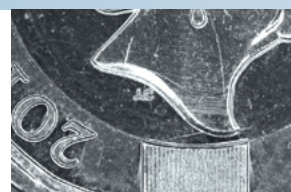
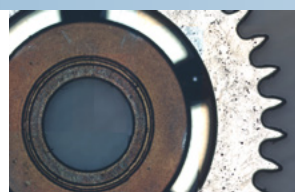
Opto Imaging Modules are a family of integrated, 'plug and play' imaging devices, featuring an optimised combination of onboard camera, optics, illumination and electronic control interface that together deliver a perfect image 1st time, every time for virtually any imaging application.

Designed for smart production, and many 'Industry 4.0' applications, Opto Imaging Modules bring an unprecedented level of intelligent, easy-to-use, easy-to-integrate, imaging performance to any production environment - from measurement machines to test systems or roundness analysis to bio imaging instrumentation.



Each Module is provided with its own SDK and image acquisition software, making it simple to integrate into any network or system.

- High performance imaging with simple plug-and-play functionality
- A perfect 'ready optimized' image, based on a high performance, closed loop optical design
- One imaging module for one imaging task
- Full configuration via online configurator
- One wire concept - single wire to the device
- Robust aluminum block design with unlimited mounting options
- Full CE / Rohs compliance



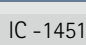
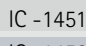
One Unit  
One Wire  
Plug and Play



# Technical Specifications

FoV mm	WD mm	Resolution		Image	Frames /sec	Light LED	Sensor Sony Pregius	linea S	
		achivable LP/mm	measurement µm/pixel						
55 x 41	300	12,5	38	monochrome	243	non	1.6 MP   IMX273	IL - 0610002UBE	
55 x 41	300	12,5	38	color	243	non	1.6 MP   IMX273	IL - 0610002UCE	
89 x 67	300	8	61	monochrome	243	non	1.6 MP   IMX273	IL - 0610001UBE	
89 x 67	300	8	61	color	243	non	1.6 MP   IMX273	IL - 0610001UCE	
95 x 71	500	7	66	monochrome	243	non	1.6 MP   IMX273	IL - 0610003UBE	
95 x 71	500	7	66	color	243	non	1.6 MP   IMX273	IL - 0610003UCE	
151 x 113	500	5	104	monochrome	243	non	1.6 MP   IMX273	IL - 0600001UBE	
151 x 113	500	5	104	color	243	non	1.6 MP   IMX273	IL - 0600001UCE	
195 x 146	1000	4	135	monochrome	243	non	1.6 MP   IMX273	IL - 0600003UBE	
195 x 146	1000	4	135	color	243	non	1.6 MP   IMX273	IL - 0600003UCE	
307 x 230	1000	2,5	212	monochrome	243	non	1.6 MP   IMX273	IL - 0600002UBE	
307 x 230	1000	2,5	212	color	243	non	1.6 MP   IMX273	IL - 0600002UCE	

all Modules are USB 3.1 Versions, have an Aluminium Block design with a USB C-Connector | CE / RohS conform

FoV mm	WD mm	Resolution		Image	Frames /sec	Light LED	Sensor Sony Pregius	linea M		compact M	
		achivable LP/mm	measurement µm/pixel								
7,1 x 5,3	87	110	3,4	monochrome	55	non	3.1 MP   IMX265	IL - 1451001UBE		IC - 1451001UBE	
7,1 x 5,3	87	110	3,4	color	55	non	3.1 MP   IMX265	IL - 1451001UCE		IC - 1451001UCE	
8,5 x 7,1	87	110	3,4	monochrome	36	non	5.0 MP   IMX264	IL - 1452001UBE		IC - 1452001UBE	
8,5 x 7,1	87	110	3,4	color	36	non	5.0 MP   IMX264	IL - 1452001UCE		IC - 1452001UCE	
9,5 x 7,1	99	90	4,6	monochrome	55	non	3.1 MP   IMX265	IL - 1431001UBE		IC - 1431001UBE	
9,5 x 7,1	99	90	4,6	color	55	non	3.1 MP   IMX265	IL - 1431001UCE		IC - 1431001UCE	
11,3 x 9,4	99	90	4,6	monochrome	36	non	5.0 MP   IMX264	IL - 1432001UBE		IC - 1432001UBE	
11,3 x 9,4	99	90	4,6	color	36	non	5.0 MP   IMX264	IL - 1432001UCE		IC - 1432001UCE	
14,2 x 10,7	132	71	6,9	monochrome	55	non	3.1 MP   IMX265	IL - 1531001UBE		IC - 1531001UBE	
14,2 x 10,7	132	71	6,9	color	55	non	3.1 MP   IMX265	IL - 1531001UCE		IC - 1531001UCE	
16,9 x 14,1	132	71	6,9	monochrome	36	non	5.0 MP   IMX264	IL - 1532001UBE		IC - 1532001UBE	
16,9 x 14,1	132	71	6,9	color	36	non	5.0 MP   IMX264	IL - 1532001UCE		IC - 1532001UCE	
23,7 x 17,8	202	45	11,5	monochrome	55	non	3.1 MP   IMX265	IL - 1621001UBE		IC - 1621001UBE	
23,7 x 17,8	202	45	11,5	color	55	non	3.1 MP   IMX265	IL - 1621001UCE		IC - 1621001UCE	
28,2 x 23,6	202	45	11,5	monochrome	36	non	5.0 MP   IMX264	IL - 1622001UBE		IC - 1622001UBE	
28,2 x 23,6	202	45	11,5	color	36	non	5.0 MP   IMX264	IL - 1622001UCE		IC - 1622001UCE	

Dimensions:    linea S    60 x 46 x 40 mm    Weight:    85 g  
                           linea M    155 x 46 x 40 mm                            120 g  
                           compact M    70 x 150 x 40 mm                            135 g

WD = Working Distance  
 FoV = Field of View

direct link to detailed product  
 information on our website



Made in Germany

Specifications are subject to change without prior notice

221018

**Opto GmbH**  
 Lochhamer Schlag 14  
 82166 Gräfelfing  
 Munich, Germany

+49 89 89 80 550  
 info@opto.de  
 www.opto.de

**Opto UK Ltd**  
 Daresbury Innovation Centre  
 Keckwick Lane, Daresbury  
 Cheshire WA4 4FS, United Kingdom

+44 1925 606 595  
 info@opto-uk.com  
 www.opto-uk.com