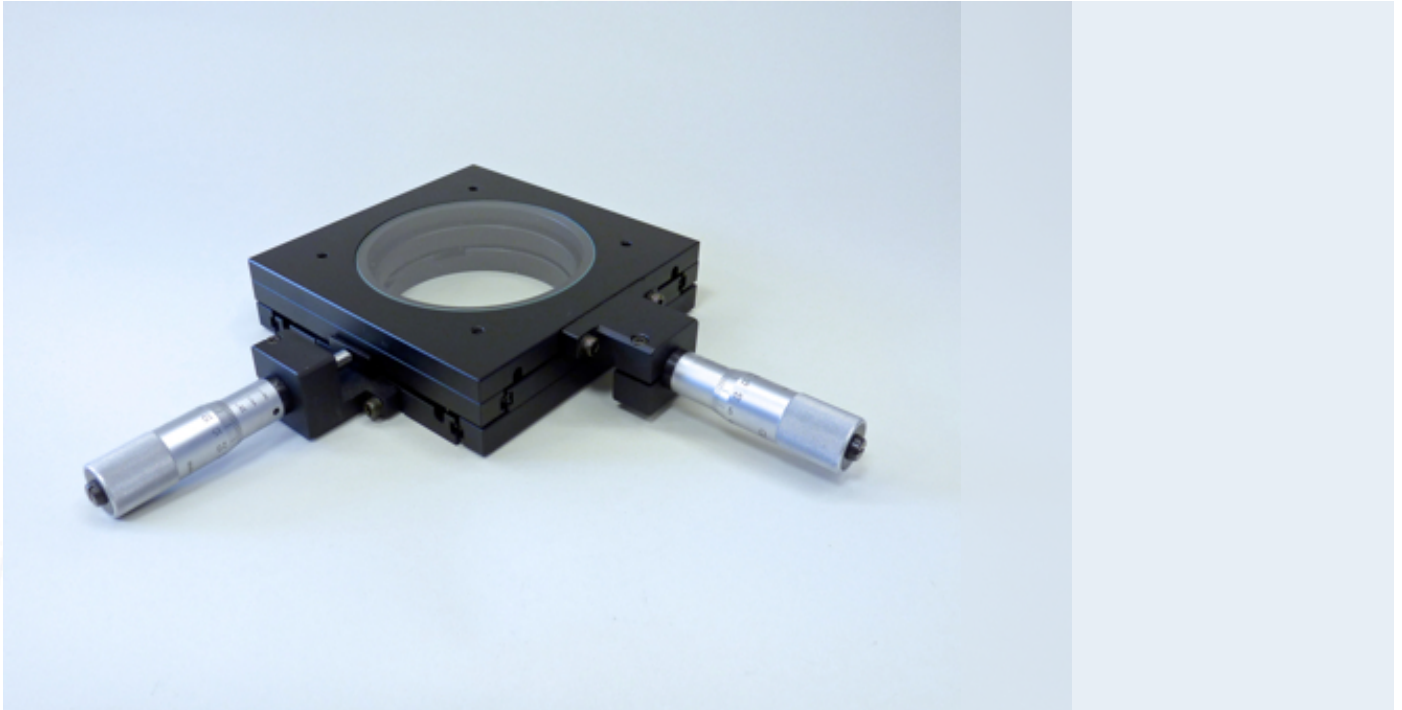


Measuring Stage 50x50 mm Analog, Glass Plate

Messtisch 50x50 mm Analog, Glasplatte

Table de mesure 50x50 mm analogique, plaque de verre



Technical Features

Article number 100-MS50-GAN

- Glass plate D=100 mm for incident and transmitted light application
- Cover plate 135 x 135 mm
- Stage height = 35 mm
- Maximum load 10 kg
- with 2 manual micrometer spindles Measurement range: 50 mm; Resolution: 0.01 mm



Technical Drawing

