



## CylinderInspector QuickTest

with C-Mount



### Specification

#### 2D System

Fast optical inspection with camera, optional with eyepiece.

Camera	Sensor: CMOS, Interface: USB
light source	Coaxial high-power LED lighting with battery operation (incl. USB charger)
Insertion axis	Manuel driven
Insertion depth [mm]	approx. 150
Cylinder diameter [mm]	70 - 89
Rotation axis	Manual driven
Magnification	Integrated 7x zoom (with click stops)
Field of View [mm]	~ 5.0 x 6.2 - 0.7 x 0.9
Focus	Manuel driven
Tread contact material	Teflon / Delrin



## 2D- surface metrology

- Destruction-free sample analysis
- High-end optics for optimal image of cylinder surfaces
- Integrated optical zoom, to realize variable magnification levels
- 360° round view with variable immersion depth
- Adaptation to different cylinder diameters
- Optimum lighting for different surfaces and structures
- Available with camera or eyepiece depending on model

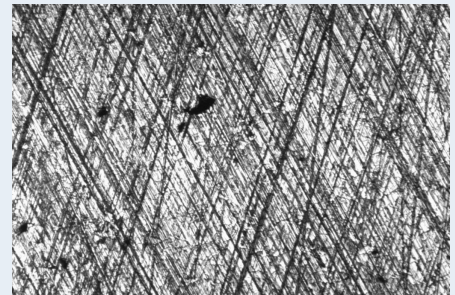


Fig. measurement of honing structures

### Your Benefit:

- Automatic measurement of the hollow angle
- Manual analysis of crystal distribution / Destruction rate of the crystals
- Implementation of a standardized inspection process between the supplier and the customer
- Customer-specific measurement parameters and reports

### Optional 2D CylinderInspector software suite:

- Automatic honing angle measurement
- Manuel interactive measurement
- Protection of application-specific measurement profiles
- Definition of sample-dependent limit values
- Modifiable software interface and customer-specific test reports
- Modularly expandable for the analysis of pores and particles
- Optional stitching module for the realization of panoramic photographs

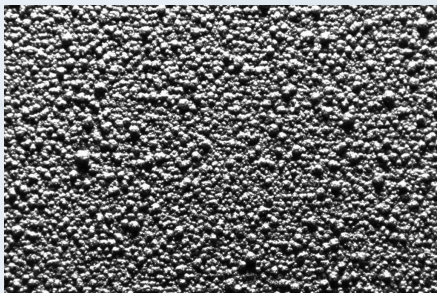


Fig. analysis of coated treads

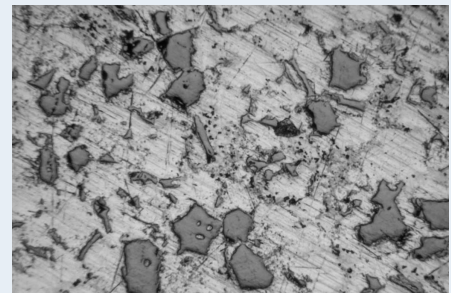


Fig. rate of Si crystal destruction